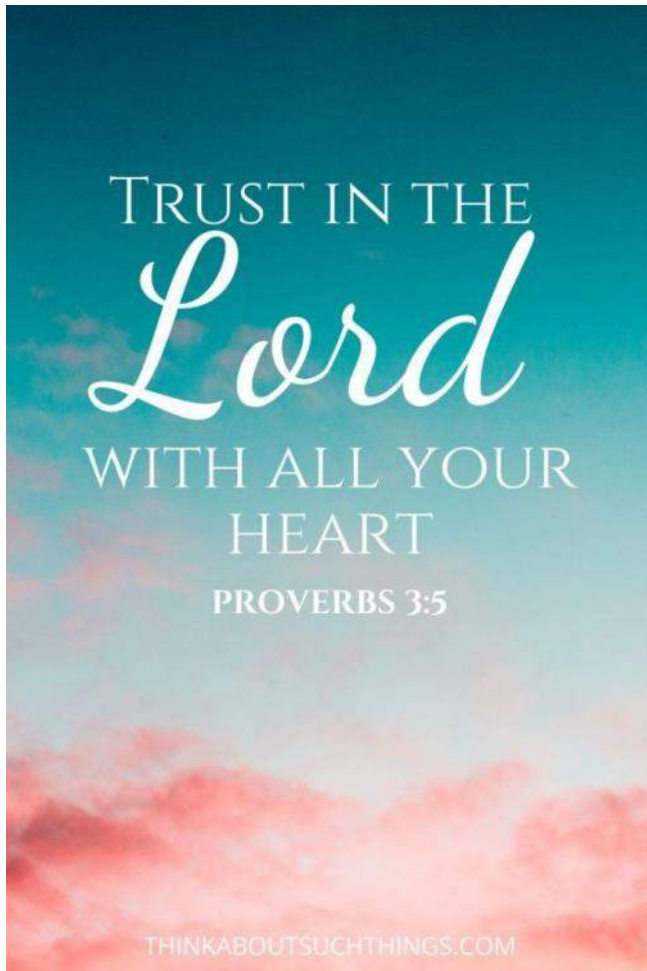


St Thomas' and St Luke's Ashton - in - Makerfield



June 2021

50p

www.stthomasstluke.org.uk

Church Services in St Thomas' and St Luke's

Sundays

St Thomas'

1 st Sunday	2 nd Sunday
9am Communion 10.45 All Age Worship	9am Morning 11am

Usual services are suspended. Please ring Jan (721626) to book for St Thomas' 9.30am Sunday service and Carole (517318) for St Luke's 11am Sunday service.

Please note that places are limited.

in the hub
ones in the hub

at 11am

Communion

Family Worship

Family Worship

Weekdays

Thursday 9.45am
Holy Communion (BCP)
in St Thomas'

Please see weekly notice sheet or visit
website for additional services details or
exceptions.

Deadlines: Handwritten material should be given to Malcolm Taylor and email material to magazine@stthomasstluke.org.uk

Deadline	July	August
Hand Written	11th June	N/A
Emailed	18th June	N/A
Magazine Release	27th June	N/A

Contents

<u>Letter from David</u>	4
<u>Mothers' Union</u>	6
<u>News from Our Churches</u>	8
<u>Local History</u>	10
<u>Community Action</u>	12
<u>Church Wigan</u>	15
<u>Crossword Puzzle</u>	18
<u>June Holy Days</u>	20
<u>Wordsearch</u>	22
<u>Donations</u>	32
<u>The Registers</u>	34

Important Information

Baptisms

Baptisms normally held at St Thomas' Church at 12.45pm on the 2nd and 4th Sundays of the month.

Baptisms at St Luke's are at 11am on the 3rd Sunday.

To qualify for baptism parents should live within the parish boundaries or be a regular worshipper at St Thomas's or St Luke's. Parents and godparents should have been baptised and be prepared to attend a baptism preparation session.

Funerals

Every parishioner has the right to a service in church (if church is open), followed by a committal.

Marriage

You can marry in a CofE Church of your choice if certain criteria are shown to be met.

If you would like further information or to book a funeral, wedding or a baptism, please ring 01942 727275 or email office@stthomasstluke.org.uk



Letter from David

I don't know about you, but as I write this at the end of May, I've no idea what season we're in. Is it spring, summer or still the winter? The weather is no help in working this out – one minute the sun is out, and the birds are rejoicing in song, and the next, it's raining and blowing a gale!

So, there's no consistency, no telling what season we're in really from one day to the next.

For me, the 26th of June will mark the start of a definite new season. At 4pm in the Cathedral in Liverpool I will be welcomed into the church, along with others from our diocese, the public marking of a change in our lives.

It's an event I wouldn't have predicted from the previous seasons of my life. But it's a change that, when I think about it, has been coming to life for a long time. Just like the plants and flowers growing in your garden; one minute they're bound in the frozen ground, lifeless and waiting, and the next moment they're blossoming.

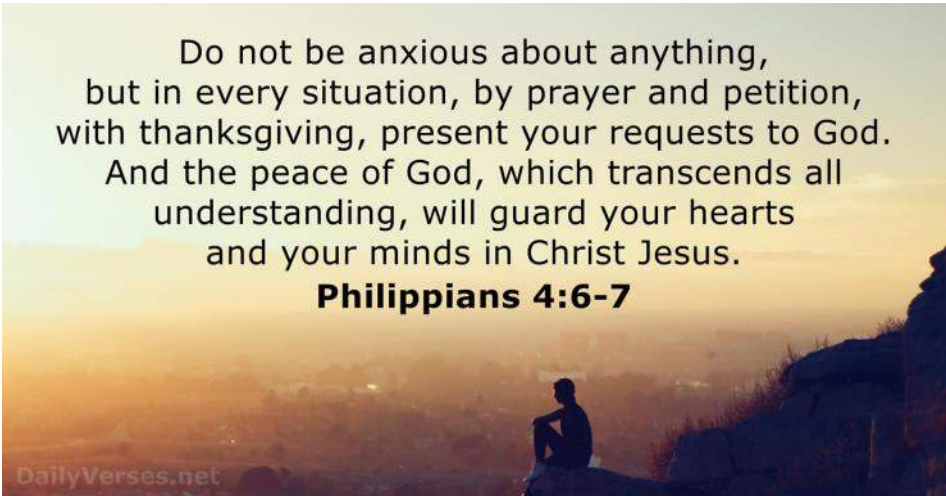
The Bible uses "season" as a word marking a change, and a time, and as with growing things, the time of waiting, and being made ready to sprout and blossom is different, – and for all of us I believe that's true too.

We can start out in life thinking we know how our journey will progress, and where the path will lead us, and that's fine for some people, and for others, the path has twists and turns, and can end up over time, somewhere we might not have imagined. And I believe the seasons we've lived through form who we are in the new time.

But I want to say that if the path is taken in faith, and trusting in God, he will walk that path with us, to whatever lies ahead, and whether that's sun or rain, God's presence will remain with us.

I was asked to write a message of farewell as I begin this new season, but there can't really be a farewell from the roots and foundations of where I come from, so although I may not be based in the South Hub from the end of June, I will be here friends in some way, and certainly through prayer.

**God bless
David Halliwell**

A person is silhouetted while sitting on a rocky ledge, looking out over a city at sunset. The sky is a mix of orange, yellow, and light blue. The city lights are visible in the distance.

Do not be anxious about anything,
but in every situation, by prayer and petition,
with thanksgiving, present your requests to God.
And the peace of God, which transcends all
understanding, will guard your hearts
and your minds in Christ Jesus.

Philippians 4:6-7



Mothers' Union

Diary:

The 21st June promises relief from the restrictions which have prevented our normal meetings taking place in person. I have tentatively arranged our June meeting to be the postponed visit to St Oswald' Church for a conducted tour lead by John Francis. Details will be confirmed later but this is something to be looked forward to.

We have managed three meetings by the means of Zoom, sadly this medium is not available to everyone. I would however like to thank our speakers firstly Babs Hennessey who told us about the life of Mary O'Shaughnessy a local heroine. Mary was born on the 12 March 1898 at Pleasant View Wigan Road. At the outset of World War Two she was working as a governess in France where she helped airmen who had been shot down return to England. Betrayed, by a so call friend, she was captured by the Gestapo and imprisoned in Mont Luc Prison in France, tortured and then transported by cattle truck to Ravensbrook Concentration Camp in Germany where she suffered many untold cruelties at the hands of the guards. She was liberated by a Swedish Mission and returned to England. She appeared as a witness at the Nuremberg trials and later returned to her role as a governess working in Kenya. She died on the 11th September 1973 while visiting from Kenya. After the war Mary was made an honorary member of the Royal Airforce Escaping Society.

Our second speaker was John Lutas who gave a very interesting but equally disturbing illustrated talk, concerning his involvement with the Asia Link which is an adventurous and passionate mission organisation comprising of people who believe in the power of Jesus to transform every Asian life. He spoke particularly about the work of Asia Link with the country of Laos and the appalling conditions in which many of the people there are forced to endure as part of normal life.

I must confess that without the help of Jan and Juliette I would have been at a total loss of how to run these meeting, so my personal thanks are due to both of them.

Come, Holy Spirit, come.

Let there be peace on earth and let it begin with us.

Open our eyes, Father, to your world full of your beauty, love, grace.

Remind us of your Son, our Saviour who brings forgiveness, reconciliation and hope to broken, hurting people.

And may your Holy Spirit equip us with wisdom, truth and the desire to

bring about your kingdom in our hearts, homes, communities and world.

Let there be peace on earth, and let it begin with us.

In Jesus' name, we pray. Amen

Rita Pengelly Diocese of Canterbury UK

Love and Prayers
Barbara



News from our churches

PCC

The last week was an important one in the life of Wigan Parish South in general and St Thomas and St Luke's churches in particular as the Annual Parish meetings were held by Zoom in May. Those who are familiar with these meetings, which are a legal necessity in our church each year, will know that at the first meeting we elect two churchwardens for the coming year, and at the second meeting which is open to those on the Parish Electoral Roll, the annual report is presented. This report includes details of the parish accounts for the previous year and reports from the wardens on the fabric of our buildings.

At the first meeting Anita Archer retired as a warden and was replaced by Helen Weavers. at the second meeting Maurice Smith who had been a member of the PCC elected for one year did not seek re-election creating a vacancy intended to be filled by a member from St Thomas or St Luke's. A second similar vacancy was created when Helen Weavers changed her status from a PCC member to that of warden. Jan Cornthwaite, our Local Missional Leader and Jess Bradley, our Magazine Editor, were both elected to the PCC to fill the vacancies. Also at the meeting Jackie Wilson stepped down as a Deanery Synod Representative.

Through the pages of this magazine I would like, on behalf of us all, to thank Anita, Jackie and Maurice for their service during the past year. Also to congratulate their successors and uphold them in our prayers.

As we are now one parish it important that we are aware of those who represent us I am therefore setting out full details of the members and officers of the PCC.

Church Wardens: Paula Gillespie & Helen Weavers

Deanery Synod representatives: Mansell High, Sharon Liptrot, Sue Neil, Philip Stott, Christine Wakefield.

PCC Members: Stuart Barton, Jessica Bradley, Tony Card, Catherine Cloake, Jan Cornthwaite, Alex Finney, Lesley Hughes, Carole Pye, Joan Roberts, Rosalyn Unsworth, Lorraine Webb and Eth Yates

Secretary: Tricia Hancox

Treasurer: Sarah Riley

Hub Leader: Jeremy Thomas

Associate Hub Leader: Sue Fulford

Team Rector: Neil Cook

Worship

The Government Road Map out of the pandemic continues to restrict our services at St Thomas to that held in the church hall at 9.30am on Sunday and at St Luke's at 10.00am. These services will continue at St Luke's until restrictions are lifted and at St Thomas until the our church building can reopen following the completion of the re-order in July.

Having attended and indeed being privileged to lead the at 9.30am I have been able to participate in a warm and welcoming return to in person worship. The service is enjoyed by those who attend. It would, however be lovely to see more of our old friends booking in. I would like to thank Jan, our very busy Local Missional Leader, for organising this service each week and those who lead and preach. I am sure the work put in is fully appreciated by those attending.

The Church re-order

The work continues in accordance with the timetable with the next big job being the laying of the new floor tiles in the nave and carpet tiles in the chancel. At the time of writing the decoration, which was made necessary by the excessive condensation, is almost complete.

I have set out overleaf our thanks for the members of our congregation who have kindly donated to our new chair appeal.

New Chairs

The following donations are acknowledged with thanks:

- Mike Allendar and Joanna Wooff
- Joan Graham
- Peggy Tarleton
- Vera Parkinson
- Malcolm and Barbara Taylor
- Susan Hurst
- Anne Abbott
- Carole and Michael Pye in memory of Dorothy Bate
- Carole and Michael Pye and Jane and Mark Prescott
- In memory of Gaynor Wright
- Tricia Hancox
- Anita Archer in memory of James Archer and Frank Hardy
- Iris Hardy in memory of Frank Hardy
- Eric Gibson in memory of Joyce Gibson
- Margaret Cook in memory of (unknown)

Malcolm

Another glimpse into the larger than life characters from the historical past of our parish kindly provided by David Fearnley.

JAMES JAMESON (1782-1822), SURGEON, ASHTON IN MAKERFIELD

In the Warrington Road graveyard, placed vertically against the church building near the vestry door, is a gravestone with the following inscription:-

“Sacred to the Memory of James Jameson of Ashton, Surgeon, who died December 30 1822, in the 41st year of his age In medical skills he had few equals In attention to the sick None excelled him Honest to the rich He never gave them too much medicine Kind to the poor He never gave them too little An Ornament to his profession He lived respected He died regretted Zachariah Jameson of Ashton who died February 24th 1879 Aged 61 years”.

James Jameson, the surgeon, was born 15/9/1782 and baptised 11/10/1782 at St. Thomas', Ashton. James was a son of

Zachariah (Zachary) Jameson (1750 – 1788) and Martha Jameson (Woodward) who married at St. Oswald's, Winwick in 1774. Zachariah was co-partner in the Ashton hinge-making business "Jameson & Clowes". Nothing is known of James' medical career but in 1812 James Jameson, surgeon, became the tenant of the "White Lion Inn" in Ashton. The location of this premises is unknown but it included the inn, dwelling house, cottage, outbuildings, barn, stables, a small plot of land and an orchard.

James Jameson, surgeon, died 30/12/1822 and was buried at St. Thomas'. The cause of death was "St. Anthony's Fire" or to give its modern medical term ergotism. Ergotism was caused by eating rye bread, the rye being contaminated by a fungal disease called ergot. Ergot poisoning resulted in burning pains and eventually gangrene in the limbs. The name "St. Anthony's Fire" derives from the monks of St. Anthony of Egypt who set up a special Order to treat victims of the disease.

James never married and in his Will he bequeathed land, property, rents, silver plate and books to his relatives. His housekeeper received a bequest of £100. He bequeathed £1,500 and set up a Trust Fund for his natural (illegitimate) child James Titterington, aged 9, of Carnforth, Lancaster. Executors of his Will were Rev. Edmund Sibson, St. Thomas', Ashton, and Henry Shaw, cotton manufacturer, Ashton.

Zachariah Jameson 1817 -1879, named in the gravestone inscription above, was the nephew of James Jameson, surgeon, and was landlord of the "Commercial Inn", Heath Road.

David A. Fearnley.



St Thomas' Church Hall, Ashton in Makerfield

Tuesday 11am—12pm

Thursday 3pm—4pm

Saturday 11am—12pm

Sunday 3pm—4pm

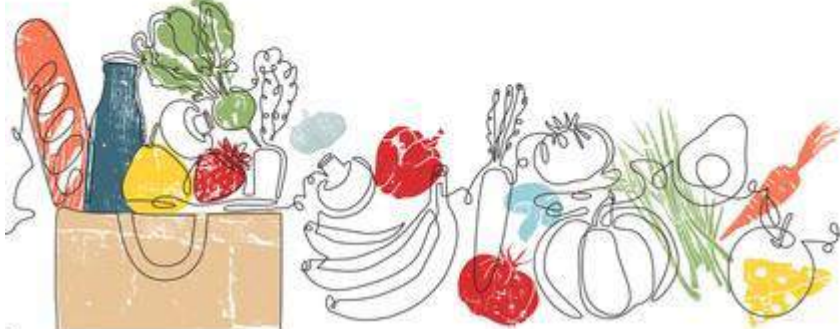
£5 annual membership

£3 per visit with a wide range of foods available

Max 2 visits per week

Additional donations welcome

Together with local businesses, we are working to reduce the amount of food going to land fill. The pantry is regularly stocked with food that is near its sell by date but can still be used to feed bellies not bins



Litter Pick

On the 15th May our church and community litter picking group removed loads of rubbish from Hilton Street and Armoury Bank.

If you want to join them on their next one on the 19th June, let us know.



**SOMETIMES IT FALLS
UPON A GENERATION
TO BE GREAT,
YOU CAN BE
THAT GENERATION.**

NELSON MANDELA



ACT Foodbank

Thank you to everyone who has been donating food to the foodbank in these difficult times and to Andrew and his team for all their work putting hampers together and delivering them as well as distributing food on a Friday morning.

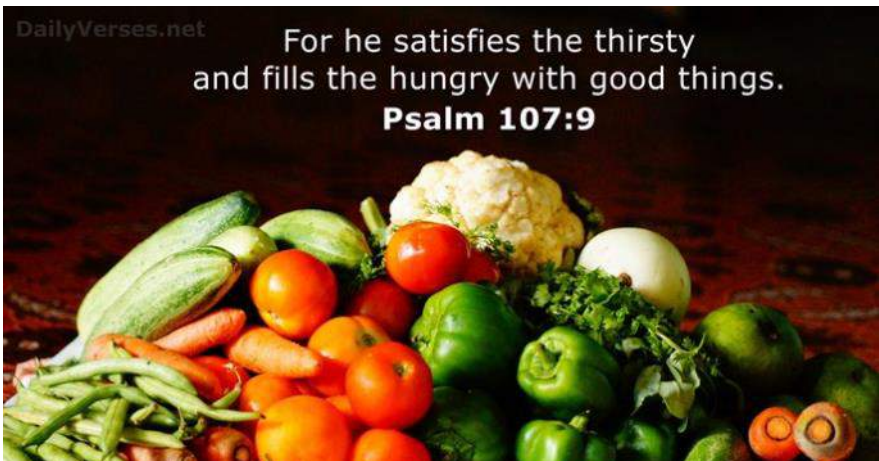
If you would like to donate any non perishable items, the please bring them to the:

- red wheelie bin outside the foodbank cabin ; or
- The food cabin on a Friday morning between 9.30am & 11.00am (food will be distributed from the church hall doorway)

Larger items can be left at the vicarage by arrangement.

If you want to leave food items for our asylum seeker friends, these can also be left at the vicarage but please make sure your bags or boxes are clearly labelled so we know who they are meant for.

Thank you very much for your support



DailyVerses.net

For he satisfies the thirsty
and fills the hungry with good things.
Psalms 107:9



A Deaf Man Is Healed By Galilee Mark 7.31-37 (New Revised Standard Version)

Then he returned from the region of Tyre, and went by way of Sidon towards the Sea of Galilee, in the region of the Decapolis. They

brought to him a deaf man who had an impediment in his speech; and they begged him to lay his hand on him. He took him aside in private, away from the crowd, and put his fingers into his ears, and he spat and touched his tongue. Then looking up to heaven, he sighed and said to him, 'Ephphatha', that is, 'Be opened.' And immediately his ears were opened, his tongue was released, and he spoke plainly. Then Jesus ordered them to tell no one; but the more he ordered them, the more zealously they proclaimed it. They were astounded beyond measure, saying, 'He has done everything well; he even makes the deaf to hear and the mute to speak.'

Reflection

This story along with the other similar exhibitions of God's power active in Jesus brings us to consider the curious distinction between 'curing' and 'healing.'

When we are suffering from some form of ailment and sickness we usually seek a 'cure' from our GP in the first instance. Certain conditions might lie outside our GP's remit and capacity therefore we may be directed to more specialist physicians for treatment. In both circumstances the curing that is, hopefully taking place' is a restoration of a physical function.

'Healing' particularly when linked to Jesus is an altogether different experience! It is not simply a cure for the presenting illness but a restoration of wholeness, a gift of abundant life!

In Jesus' day and most particular amongst the Jewish people, illness alienated people.

Even commonplace ailments brought temporary separation from normal social interaction, but for those with more pronounced conditions they could find themselves in lifelong exclusion from society and its norms.

In this healing, as with the others Jesus performed, he cuts right through the stance taken by society and, literally, stands with the man!

Jesus does not stigmatize persons with illnesses, diseases or impediments. He enters into their presence, disregarding purity codes to seek the good of the individual. So close, in fact, to place his own fingers in the man's ears and to touch his tongue!

Where the masses would regard the man's impediment as a sign of God's displeasure for his sin, Jesus removes everything that could possibly suggest that. This healing doesn't just bring physical release it integrates him into community. He moves from being an isolated 'he' in verse 35 to being part of 'they' who proclaim the good news in verse 36.

Closer scrutiny of this passage will reveal there are three prominent parties in the story. Alongside Jesus and the deaf man there are the 'they'. 'They' represent the few close friends of the deaf man who risked the same stigmatization and exile from society as their friend in maintaining close contact with him. They too, like Jesus, enter the presence of the man, undaunted by the public's distance.

They stand for the modern-day carers! The thousand upon thousand selfless souls who give so much of themselves and their liberties in caring for their loved ones!

Just like the deaf man's friends, they are tangible conduits of mercy and grace which are part and parcel of the new creation healed and redeemed by Jesus Christ.

Prayer

Heavenly Father, we pray for your Church in the healing ministry you have called it to exercise, an inner healing of body, mind and soul which only you can offer.

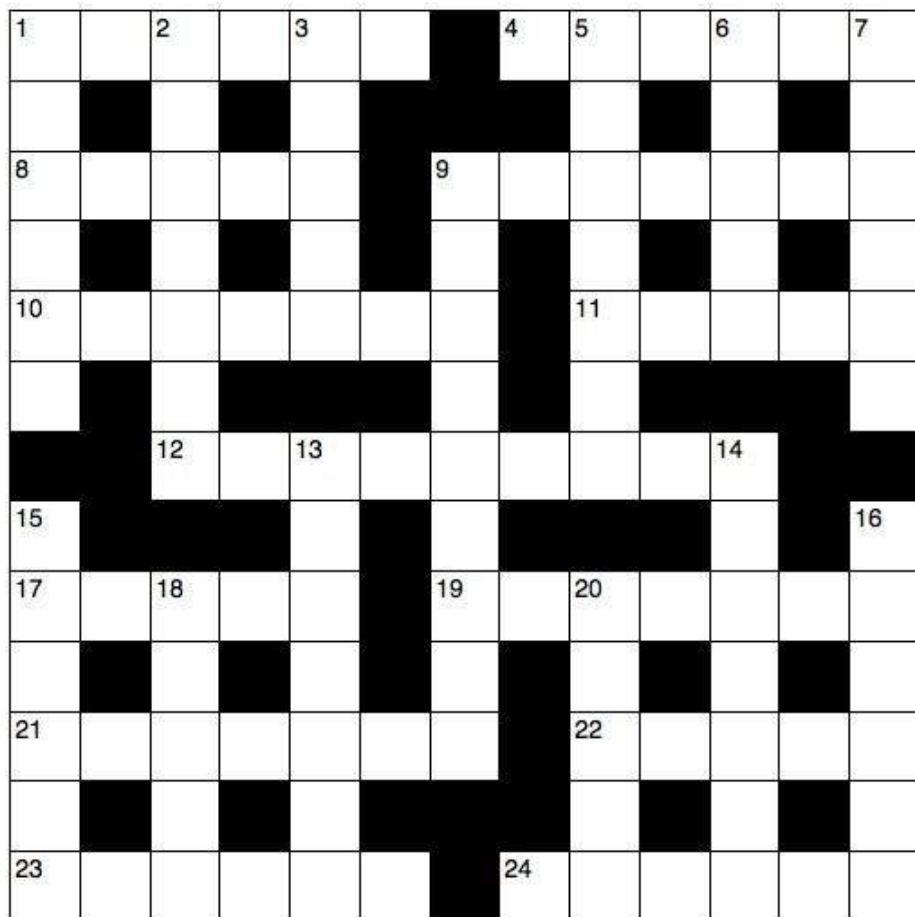
Grant that your people everywhere may be so filled with your Holy Spirit, and so touched by the grace of Christ, that they may share effectively in the wider work of healing.

Through their life and witness bring wholeness to broken people and a broken world, for this we pray in our Lord Jesus Christ's Holy Name.

Amen.

Steve Clarke
Curate (SSM)
(Church Wigan/Chaelfields Hub)

Crossword



Answers on page 23

Across

- 1 Military tactic used by Joshua to attack and destroy the city of Ai (Joshua 8:2) (6)
- 4 Place of learning (6)
- 8 'When Moses' hands grew — , they took a stone and put it under him and he sat on it' (Exodus 17:12) (5)
- 9 Unpleasant auguries of the end of the age, as forecast by Jesus (Matthew 24:7) (7)
- 10 Stronghold to which girls in King Xerxes' harem (including Esther) were taken (Esther 2:8) (7)
- 11 Where Saul went to consult a medium before fighting the Philistines (1 Samuel 28:7) (5)
- 12 Propitiation (Hebrews 2:17) (9)
- 17 Turn away (Jeremiah 11:15) (5)
- 19 So clear (anag.) (7)
- 21 'I have just got — , so I can't come': one excuse to be absent from the great banquet (Luke 14:20) (7)
- 22 Long weapon with a pointed head used by horsemen (Job 39:23) (5)
- 23 Musical beat (6)
- 24 What the Israelites were told to use to daub blood on their door-frames at the first Passover (Exodus 12:22) (6)

Down

- 1 Fasten (Exodus 28:37) (6)
- 2 Art bite (anag.) (7)
- 3 'The people of the city were divided; some — with the Jews, others with the apostles' (Acts 14:4) (5)
- 5 Contend (Jeremiah 12:5) (7)
- 6 Possessed (Job 1:3) (5)
- 7 Sheen (Lamentations 4:1) (6)
- 9 'You love evil rather than good, — rather than speaking the truth' (Psalm 52:3) (9)
- 13 Large flightless bird (Job 39:13) (7)
- 14 They were worth several hundred pounds each (Matthew 25:15) (7)
- 15 'A — went out to sow his seed' (Matthew 13:3) (6)
- 16 How Jesus described Jairus's daughter when he went into the room where she lay (Mark 5:39) (6)
- 18 The part of the day when the women went to the tomb on the first Easter morning (John 20:1) (5)
- 20 Narrow passageway between buildings (Luke 14:21) (5)

June Holy Days

4th June St Petroc, the founder of Padstow

If you would like to be in Cornwall this summer in search of peace and quiet, Petroc is the saint for you. Especially if you ever find Padstow a bit too crowded for your liking! He would have sympathised.

This 6th century abbot is Cornwall's most famous saint. Petroc set sail from South Wales, landed at Haylemouth, and founded a monastery at Lanwethinoc – now called Padstow, after him (Petroc's Stow).

Padstow must have been popular even in those days, because about 30 years later Petroc, in search of some peace and quiet, moved on to build another monastery at Little Petherick (Nanceventon). Here he must have decided to try some 6th century equivalent of 'Fresh Expressions', because he engaged with his local community by building a mill and a chapel.

In time, Petroc began feeling crowded again. So, he tramped off to the remote wilds of Bodmin Moor, where he lived as a hermit – until some 12 monks turned up to join him. Firmly, Petroc kept them all housed in a monastery on a hilltop, while he enjoyed his private space in a cell by the river.

But even here Petroc was not alone. One day a terrified stag came rushing through the woods, pursued by the hunt. Petroc flung open the door of his cell, and the panting animal took refuge. When the huntsmen arrived on the scene, they did not dare to argue with the famous holy man, and instead went their way. The stag's gratitude made him tame, and Petroc would come to be portrayed with a stag as his special emblem.

Petroc was buried in the monastery in Padstow but in c.1000 his shrine and relics, including his staff and bell, were translated to Bodmin. Here they have stayed ever since, except for a short, unplanned trip to Brittany in 1177, when they were stolen and carted off by a naughty Canon of the Church. Henry II intervened, and everything but a rib of Petroc was eventually returned.

15th June Evelyn Underhill, mystical writer of the 20th century

For anyone interested in Christian mysticism, Evelyn Underhill may be a good place to begin. She died on 10th June 1941 after a life full of remarkable achievements: author of more than 30 books that explored the intersection between the spiritual and the physical, the first woman ever to lecture to the CofE clergy, the first woman to conduct spiritual retreats for the Church, the first woman to establish ecumenical links between churches, and one of the first women theologians to lecture in English universities. Evelyn was also an award-winning bookbinder.

Born in 1875, the daughter of a barrister from Wolverhampton, and then wife to a childhood friend, also a barrister, Evelyn moved in cultured, educated circles, and travelled widely each summer along the Mediterranean – both her father and husband were keen yachting enthusiasts.

Evelyn's inner, spiritual journey was more complex: from agnosticism to theism, on to Neoplatonism and then Roman Catholicism she went, until in 1921 she became an Anglican - with a later fascination for the Greek Orthodox church. Her daily life was one of reading, writing, and doing various forms of religious work, from visiting the poor to counselling people in trouble.

Her spiritual search began in childhood, after a number of "abrupt experiences of the peaceful, undifferentiated plane of reality—like the 'still desert' of the mystic—in which there was no multiplicity nor need of explanation". Trying to understand these mystical experiences sparked her passion and lifelong quest.

Evelyn became one of the most widely read writers on mysticism in the first half of the 20th century. Her greatest book, *Mysticism: A Study of the Nature and Development of Man's Spiritual Consciousness*, was published in 1911, and is romantic, engaged, and theoretical rather than historical or scientific. While writing it she came into contact with Baron Friedrich von Hugel, who became her spiritual mentor for many years. He gradually steered her away from mysticism and towards a more Christocentric view of reality.

During World War I Evelyn worked in naval intelligence, but in later years became a Christian pacifist.

Wordsearch

h	j	f	j	c	e	s	c	g	m	q	c
o	u	a	e	h	o	t	a	a	u	s	r
l	z	l	r	e	r	u	r	n	s	s	o
y	z	l	u	e	g	m	t	g	i	l	w
c	a	u	s	r	a	b	l	r	c	h	d
a	h	j	a	e	n	l	x	y	i	o	t
p	s	o	l	d	i	e	r	s	a	b	p
i	h	k	e	h	s	d	i	g	n	e	e
t	r	u	m	p	e	t	e	r	s	d	j
a	f	r	a	i	d	a	v	i	d	h	o
l	e	v	i	t	e	s	t	o	r	e	d
r	e	s	p	e	c	t	l	a	w	s	b

capital

cheered

tribe

Jerusalem

crowd

laws

holy

angry

Levites

hill

soldiers

Ark

respect

stored

cart

organised

Uzzah

Obed

fall

trumpeters

stumbled

David

afraid

musicians



After months of lockdown, the Sunday procession probably needed some practise.

Crossword answers

ACROSS: 1, Ambush. 4, School. 8, Tired. 9, Famines. 10, Citadel. 11, Endor. 12, Atonement. 17, Avert. 19, Oracles. 21, Married. 22, Lance. 23, Rhythm. 24, Hyssop.

DOWN: 1, Attach. 2, Biretta. 3, Sided. 5, Compete. 6, Owned. 7, Lustre. 9, Falsehood. 13, Ostrich. 14, Talents. 15, Farmer. 16, Asleep. 18, Early. 20, Alley.



Opening Times

Monday	9am-5pm
Tuesday	9am-5pm
Wednesday	9am-5pm
Thursday	9am-5pm
Friday	9am-5pm
Saturday	9am-4pm
Sunday	Closed Except for Mothering Sunday

Flowertime Florist

5 Bolton Road, Ashton in Makerfield, WN4 8AA

Email: flowertime.ashton@gmail.com

Tel: 01942 715716

'We use the best quality Dutch flowers for all special occasions such as Weddings, Anniversaries, Birthdays, Funeral Tributes and many more. Please call today for your free quotation'

Special Offers

- ❖ ***5% Discount on Orders Under £100 (Minimum Spend £25 to receive discount)***
- ❖ ***10% Discount on Orders Over £100***

Please present this voucher at Flowertime Florist to receive any of the above discounts. One voucher per customer.





- Quality Workmanship
- FREE No Obligation Quotes
- Trustworthy & Reliable Service
- Over 25 Years Experience
- All Aspects of Decorating Covered
- No Job Too Small

Tel: 01942 716389
Mob: 07765 078295



MOBILE SCRATCH & SCUFF REPAIR

ScratchFix Limited

IAN BOARDMAN- SMART REPAIR TECHNICIAN

Tel: 01942 274586 Mobile: 07769 717836



Mobile: 07769 717836

SCRATCHFIX LIMITED

SAVE UP TO 50% ON BODYSHOP COSTS

Don't be without your car for days.. Most repairs completed within the hour at your home or workplace

- Key and vandal scratches
- Textured bumper scuffs
- Wing mirror scrapes
- Alloy wheel repairs
- Cracked bumper repairs
- Stone chips
- Colour coded bumper scuffs
- Full body polish

Alan Jones

FUNERAL DIRECTORS LTD

Local Independent Family Business

Traditional and modern funeral services

Horse-drawn or limousine driven funeral processions

Memorial Monuments and Services

Pre-paid Funeral Plans

*Professional funeral services in the Wigan areas.
To discuss any funeral plans please don't hesitate to contact us today.*



Ashland House
87 Old Road, Ashton in Makerfield



Tel: 01942 271824 24 Hours

Danesbrook House
21 Ladies Lane
Hindley

Tel: 01942 525504

Dove Cottage
51 Johns Avenue
Haydock

Tel: 01942 724777

Millbrook House
56 High Street
Golborne

Tel: 01942 272027

info.alanjonesfunerals@gmail.com

www.alanjonesfuneraldirectors.com





☎ 01942 727985
✉ sales@eaveswaytravel.com
www.eaveswaytravel.com

5* Cruiselink Service - Private Hire - Excursions

- ▶ Eavesway Cruiselink - taking thousands of people to and from their cruise holiday each year in style and comfort
- ▶ Executive Coach Hire - perfect for school trips, sporting events and days out
- ▶ Eavesway Exclusive - the very best in luxury coach travel, ideal for corporate hospitality and special occasions

*Eavesway Travel Ltd.
Bryn Side, Bryn Road, Ashton-in-Makerfield, Wigan, WN4 8BT*



bowen & leeming opticians



Mon 9:00 - 17:30
Tues 9:00 - 17:30
Weds 9:00 - 17:30
Thur 9:00 - 17:30
Fri 9:00 - 17:30
Sat 9:00 - 13:00
Sun - Closed

49 Gerard Street,
Ashton-in-Makerfield,
Wigan,
WN4 9AG

01942 722386
info@bowenandleeming.com

RB | R BANKS & SON FUNERALS LTD

Brian Halliwell Dip F.D M.B.I.E.

ESTABLISHED 1921

Independent Funeral Directors • Monumental Masons

A local family run business, R. Banks & Son are one of the largest independent funeral directors in the Wigan area

Founded in 1921 and now with ten funeral homes across the Wigan area the company has established itself by gaining a reputation for excellence, professionalism and sympathetic attitude.

'Golden Charter' Pre Arrangement Funeral Scheme

- Inflation proof
- Peace of mind that painful decisions will be made rationally
- Tailored to your individual needs
- All necessary disbursements included i.e. Crematorium/
Burial fees, Church fees and Doctor's fees.
- One up front payment or monthly instalments

Golden Charter
Funeral Plans 



24 hour service • Caring family firm

www.rbanksandson.co.uk

**FINANCE NOW AVAILABLE
on Funerals & Memorials**

*Subject to status,
written details on request*

**Head Office: Halliwell House, 758/768 Ormskirk Rd, Pemberton, Wigan WN5 8BB
T: 01942 222156**

Local Offices: Clifford House, 1 Grove Lane, Standish T: 01257 422011

Hallbank House, 407 Wigan Road, Bryn T: 01942 271392 • Parsonage House, 100 Railway Road, Leigh T: 01942 261415

Windsor House, 232 Scholes, Wigan T: 01942 820526 • Whitley House, 439 Gidlow Lane, Beech Hill T: 01942 829200

Elliot House, 20 Shuttle Street, Tyldesley T: 01942 887312 • Bentham House, 220 Spendmore Lane, Coppull T: 01257 793880

Stretton House, 23 Hall Green, Upholland T: 01695 622099 • Templeton Lodge, Templeton Road, Platt Bridge T: 01942 863936



C & A Hornby Ltd
Plumbing and Heating Services
11 Rydal Close,
Ashton in Makerfield, Wigan,
WN4 8AU.



Gas Safe: 11641 _

www.cahornbyplumbing.co.uk

Telephone: Phil on 01942 727890 or 07867 576164

A local family run business, established for over 20 years and CRB checked.

Contact us for:

All your plumbing needs including emergencies, repairs and replacements.



Boiler replacements and repairs including full systems and upgrades.



Gas Fire replacements and repairs.



All domestic gas work including emergencies.

Boiler and Gas Fire Service, Landlords Gas Safety Certificates,
House Move Gas Safety Certificates.



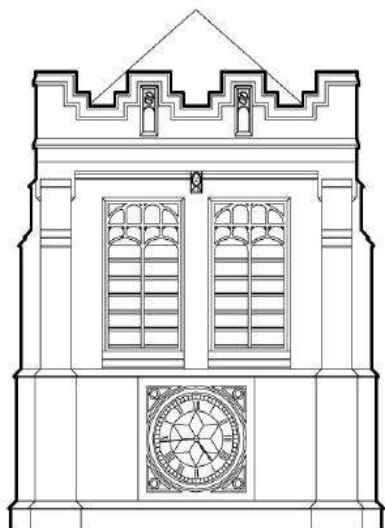
All bathroom work undertaken - complete bathroom
refurbishment with design service.



All kitchen work undertaken - complete kitchen refurbishment with
design service.



Rental Property Maintenance.



56 Belvedere Road,
Ashton-in-Makerfield,
Lancashire, WN4 8RU.

RIBA 
Chartered Practice

t 01942 717300
e info@schaferassociates.co.uk
w www.schaferassociates.co.uk

Schafer Associates | Chartered Architects



All Vehicle Repairs Carried Out

**Includes: Servicing,
Diagnostics, Clutches,
Timing Belts and more.....**

**Please phone 07845 180838
or call in for a FREE quote**

McG Auto Repairs Ltd
Cranberry Lodge Garage (behind
Macwest Motors)
Wigan Road Ashton in Makerfield
WN4 0BZ

www.mcgautorepairs.co.uk

TANGO

**TANGO at St. Marks
Church Haydock support
and resource families within
the Haydock/Ashton area
by providing food; clothing;
furniture and household
items.**



**If you have any items of furniture
that you no longer want
TANGO will collect Free
Of Charge from your
home.**



**If you want more
information about TANGO
or to arrange a collection
please ring: 01744 607388**





St Thomas' Donations & Remembrance

Please place your donation in an envelope with your full name and amount written on it. Please post through the vicarage door while church is closed. Please make cheques payable to **St Thomas' PCC**. If you want the donation to be for something specific, please write clearly on the envelope.

GIFT AID

If you are a UK tax payer and would like church to be able to claim back 25p for every £1 you donate, please complete a Gift Aid form or state on your envelope that you are a UK tax payer, would like the donation to be Gift Aided and include your full name and address.

REGULAR GIVING

Many people are asking us how they can give their usual weekly offerings. We do appreciate your concern for the finances of the church as the plate offerings help towards the payment that has to go to the diocese each month. We need to continue these payments as the outgoings of the diocese will remain the same while church is closed. Please consider switching to the Parish Giving Scheme by phoning 0333 002 1271 as we can get the tax back much quicker this way.

If you want to continue giving by envelope, please take them to the vicarage, or to Malcolm and Barbara's (32 Townfields), clearly marking the envelopes if it is for more than one week.

Funds currently in use are: Africa Fund, Asylum Seeker, Audio Visual, Church Hall, Building & Maintenance, Food Ministry, Garden of Rest, General, Grave Maintenance, Heath Road Graveyard, Heating and Fit for the Future.

Unless otherwise stated donations will go into the General

If you wish to discuss any issues around Wills and Legacies please ring the Parish Treasurer Sarah Riley on 01942 722747.

St Thomas' Donations & Remembrance



Birthday memories of **Graham McLaren** (2014) a dearly loved
Dad and Grandad
from Pauline, Kevin, Susan, Nick, Jack & Scarlett

Anniversary remembrance of **Ina McLaren** (23rd May) a dearly
loved mum and Grandma
from Pauline, Kevin, Susan, Nick, Jack & Scarlett

Birthday memories (24th June) of a dear husband **Allan Deluce**
from Elsie and family

With loving 80th birthday remembrance of **Peter Raymond**
(1st June)
from Margaret and family

Thank you to all those who have made donations to purchase
chairs



The Registers



Funerals - "May they rest in peace"

30th April 2021	Norman Cordell	Grange Road	77
28th May 2021	Eileen Abbott	Golborne Road	82



God of love and mercy,

embrace all those whose hearts today

overflow with grief, unanswered questions

and such a sense of loss.

Grant them space to express their tears.

Hold them close through the coming days.

Amen.



Church Organisations in St Thomas' and St Luke's

<u>Coffee Mornings at St Thomas'</u> Tues 10am-12pm Barbara Taylor 205136	<u>Flower Guild</u> Meta Laites 723679
<u>Children, Young People and Families</u> Sue Thomas 07877 704645	<u>Asylum Seeker Support</u> Anne & Chris Wooff 724207
<u>Church Architect</u> Bill Schafer 717300	<u>F.W.O. Secretary</u> Vacant
<u>Wednesday Weenies</u> Wed 1pm-2:30pm - Church Hall Jan Cornthwaite 721626	<u>Messy Tots</u> Wed 1pm-2:30pm - Church Hall Sue Thomas 07877 704645
<u>Duke of Edinburgh's Award (14-18+)</u> Sun evenings Church Hall Ceri Mansell 727417	<u>St Thomas' Mothers' Union</u> 3 rd Wed: 7:30pm Barbara Taylor 205136
<u>Fairtrade Stall</u> 3 rd Sun 11.45am Anne Wooff 724207	<u>Fur Clemt Stubshaw</u> Mon 12-1pm at St Luke's Jennifer Harrison 718618
<u>Litter Pick 3rd Sat 10am - noon</u> Chris Wooff 724207	<u>Bowling Club</u> Henry Hunter 712709
<u>Girl Guides</u> Rainbows (Tues 5:30pm) Danielle Wood 07841 649475 3 rd & 4th Ashton Brownies (Thu) 3 rd Ashton Guides/Rangers (Tues 7:15pm) Rachel Starkie 718350	<u>Children's Sunday Clubs St Thomas'</u> Bubbles (Pre-School) Splash (R-Y2) Xstream (Y3-Y6) Bell Tower (Y7-Y11) Karen Cunliffe 07721770305

Church Officials in St Thomas, St Luke's and Wigan South Parish

<p><u>Hub Leader</u> Rev Jeremy Thomas 727275</p> <p><u>Assistant Hub Leader</u> Sue Fulford</p>	<p><u>Sunday Morning Worship</u> <u>Local Missional Leaders (LML)</u> <u>St Thomas'</u> Jan Cornthwaite 721626</p> <p><u>St Luke's</u> Carole Pye 517318</p>
<p><u>Ordained Local Minister</u> Rev Izzy Schafer 717300</p>	<p><u>Saturday FM</u> 4pm-5pm - St Thomas' School LML Nicola Burgess 706841</p>
<p><u>Readers</u></p> <p>Tricia Hancox 201540 Alan Harrison 718618 Carole Pye 517318 Helen Weavers 07796 334457</p>	<p><u>Parish Church Wardens</u> Anita Archer 07863 298336 Paula Gillespie 07716 667763</p>
<p><u>Parish Treasurer</u> Sarah Riley 07712 584954</p> <p><u>St Thomas' Assistant Treasurer</u> Phil Hayton 273183</p> <p><u>St Luke's Assistant Treasurer</u> John Boon 728900</p>	<p><u>St Thomas' Assistant Wardens</u> Tony Cornthwaite 721626 Paula Gillespie 711270</p> <p><u>Deputies</u> Barbara Taylor 205136 Mansell High 727052</p>
<p><u>Prayer</u> Carol Foster 733263</p>	<p><u>St Luke's Assistant Wardens</u> Carole Pye 517318 John Boon 728900</p>
<p><u>PCC Secretary</u> Tricia Hancox 201540</p>	<p><u>Parish Electoral Roll Secretary</u> Sue Thomas 07877 704645</p>
<p><u>St Thomas' Organist</u> Paul Tushingham 711085</p>	<p><u>Worship Group</u> Mary Owen 203277</p>
<p><u>Church Office, Church Hall</u> <u>Bookings / Magazine Advertising</u> Sue Thomas 721484 office@stthomasstluke.org.uk</p>	<p><u>Magazine Editor</u> Jess Bradley magazine@stthomasstluke.org.uk</p> <p><u>Magazine Distribution Coordinator</u> Vacant</p>